



JOHN DEAN
Estate Agents
Chartered Surveyors

Tel: 020 8673 8855 Fax: 020 8673 4879
email: info@johndean.co.uk

189 Balham High Road, London SW12 9BA



Photo's from archive



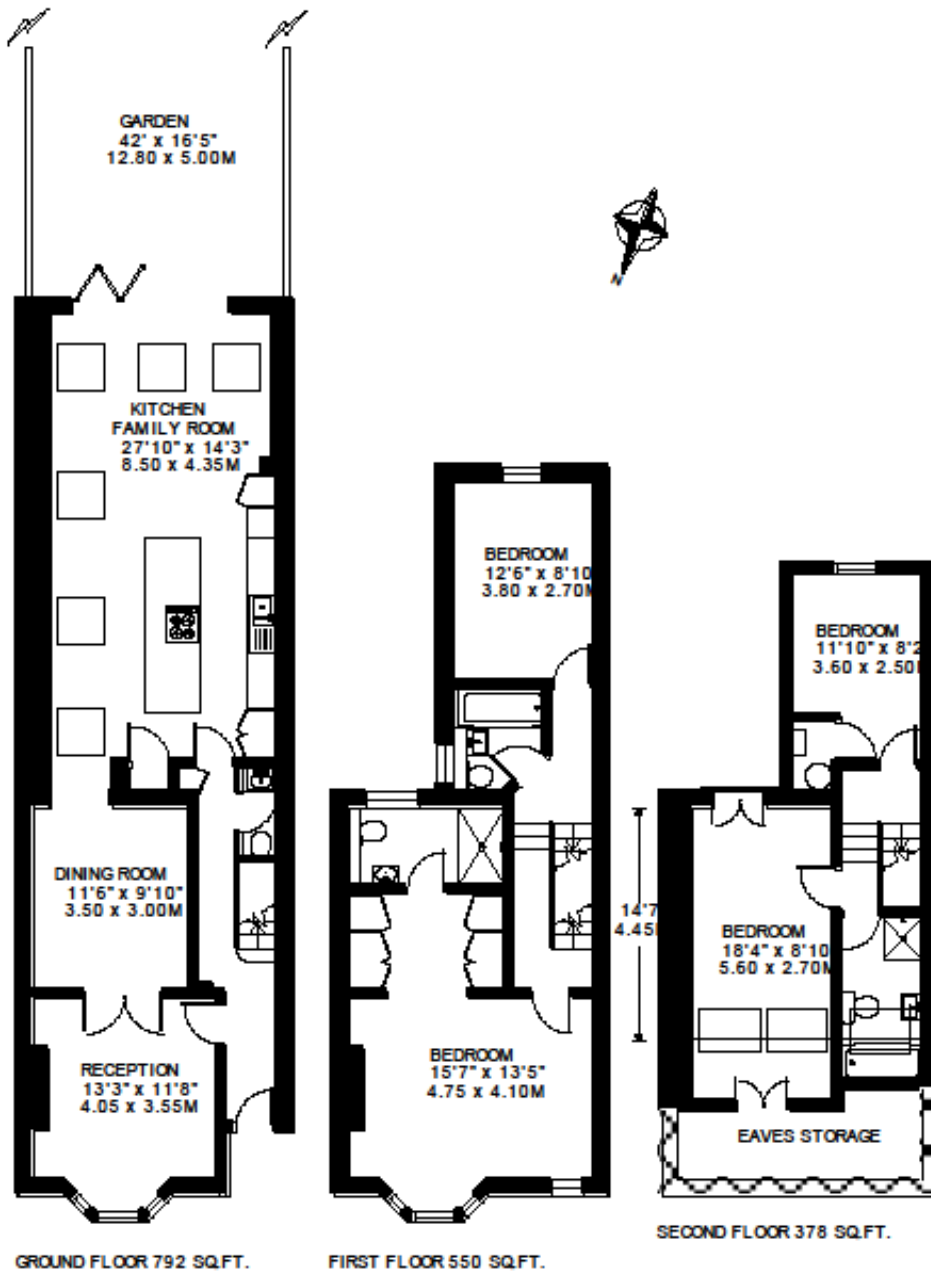
Wandle Road SW17 7DL

A beautifully modernised family house located in a highly desirable road close to Wandsworth Common.

£875 pw / £3790 pcm – Fees apply

WANDLE ROAD LONDON SW17

APPROXIMATE INTERNAL FLOOR AREA
1720 SQ.FT. / 159.8 SQ.M.
 PLUS EAVES STORAGE 72 SQ.FT. / 6.7 SQ.M.



© FLOORPLAN PRODUCED FOR JOHN G. DEAN & Co. BY FLOORPLANNERS 07801 228850
 ALL MEASUREMENTS ARE MAXIMUM, AND INCLUDE WINDOW BAYS AND WARDROBES WHERE APPLICABLE

