



JOHN DEAN
Estate Agents
Chartered Surveyors

Tel: 020 8673 8855 Fax: 020 8673 4879
email: info@johndean.co.uk

189 Balham High Road, London SW12 9BA



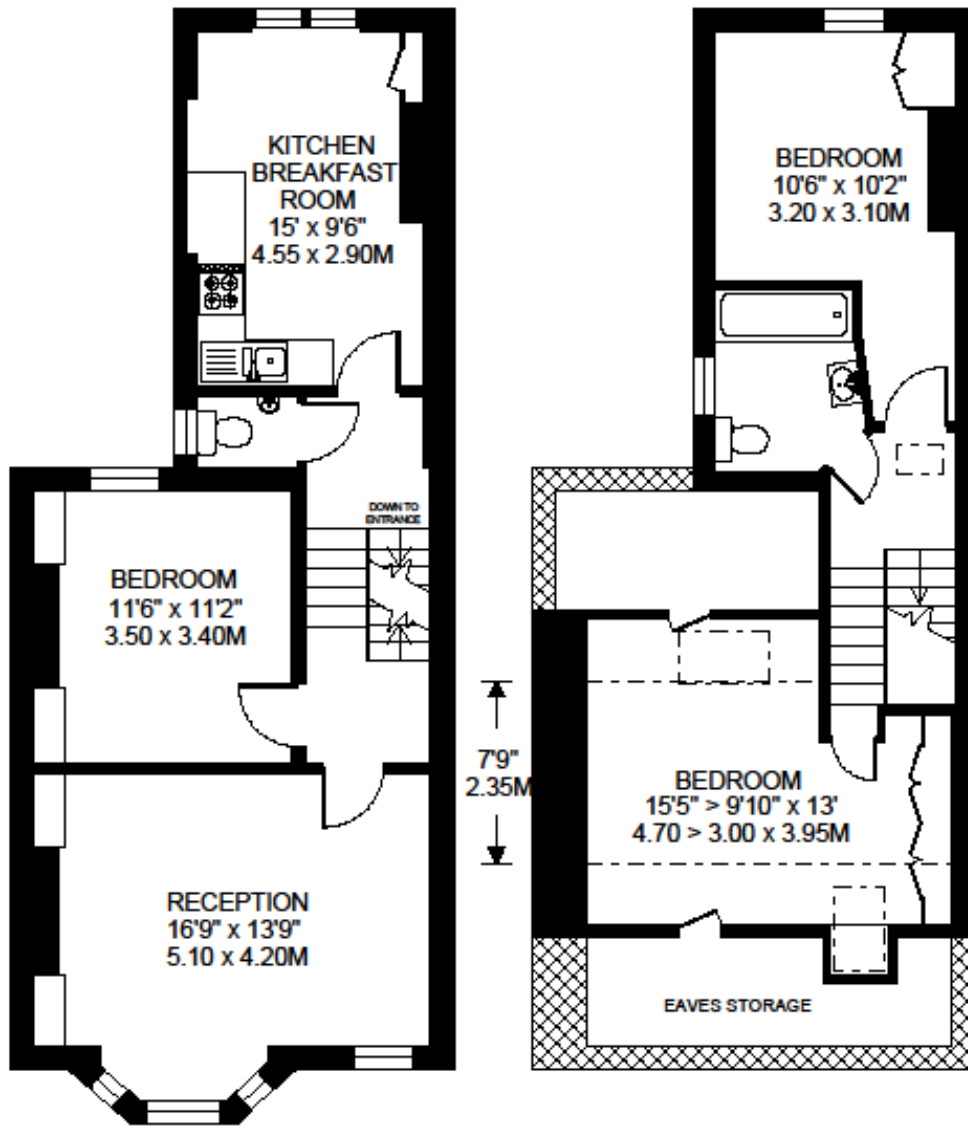
CLAPHAM

A characterful three double bedroom Victorian conversion with period features, a large reception room and a separate kitchen/breakfast room. Located off Clapham Common Northside between close to Clapham Common tube.

£570 pw / £2470 pcm – Fees Apply

**TREGARVON ROAD
LONDON SW11**

APPROXIMATE INTERNAL FLOOR AREA
1028 SQ.FT. / 95.5 SQ.M.
PLUS EAVES STORAGE 120 SQ.FT. / 10.0 SQ.M.



FIRST FLOOR 600 SQ.FT.

SECOND FLOOR 428 SQ.FT.

© FLOORPLAN PRODUCED FOR JOHN G. DEAN & Co. BY FLOORPLANNERS 07801 228850
ALL MEASUREMENTS ARE MAXIMUM, AND INCLUDE WINDOW BAYS AND WARDROBES WHERE APPLICABLE

