



JOHN DEAN
Estate Agents
Chartered Surveyors

Tel: 020 8673 8855 Fax: 020 8673 4879
email: info@johndean.co.uk

189 Balham High Road, London SW12 9BA



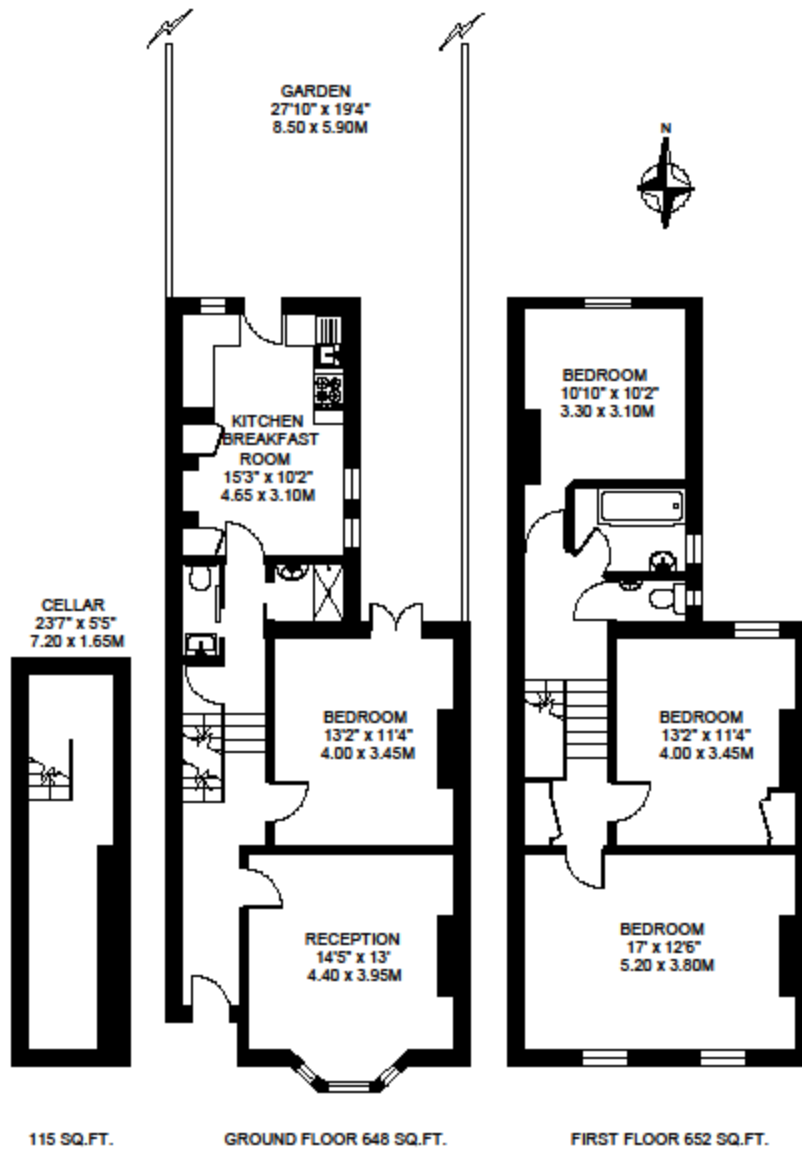
BALHAM

A tastefully modernised four double bedroom Victorian house located in a sought after road between Wandsworth Common and Balham. Both tube & train stations are close by as well as the green open expanses of the common. An excellent choice of shops and restaurants are also close by on Balham High Road.

£750 pw / £3250 pcm – Fees apply

**SARSELD ROAD
LONDON SW12**

APPROXIMATE INTERNAL FLOOR AREA
1415 SQ.FT. / 131.5 SQ.M.



© FLOORPLAN PRODUCED FOR JOHN G. DEAN & Co. BY FLOORPLANNERS 07801 228850
ALL MEASUREMENTS ARE MAXIMUM, AND INCLUDE WINDOW BAYS AND WARDROBES WHERE APPLICABLE

