



JOHN DEAN
Estate Agents
Chartered Surveyors

Tel: 020 8673 8855 Fax: 020 8673 4879
email: info@johndean.co.uk

189 Balham High Road, London SW12 9BA



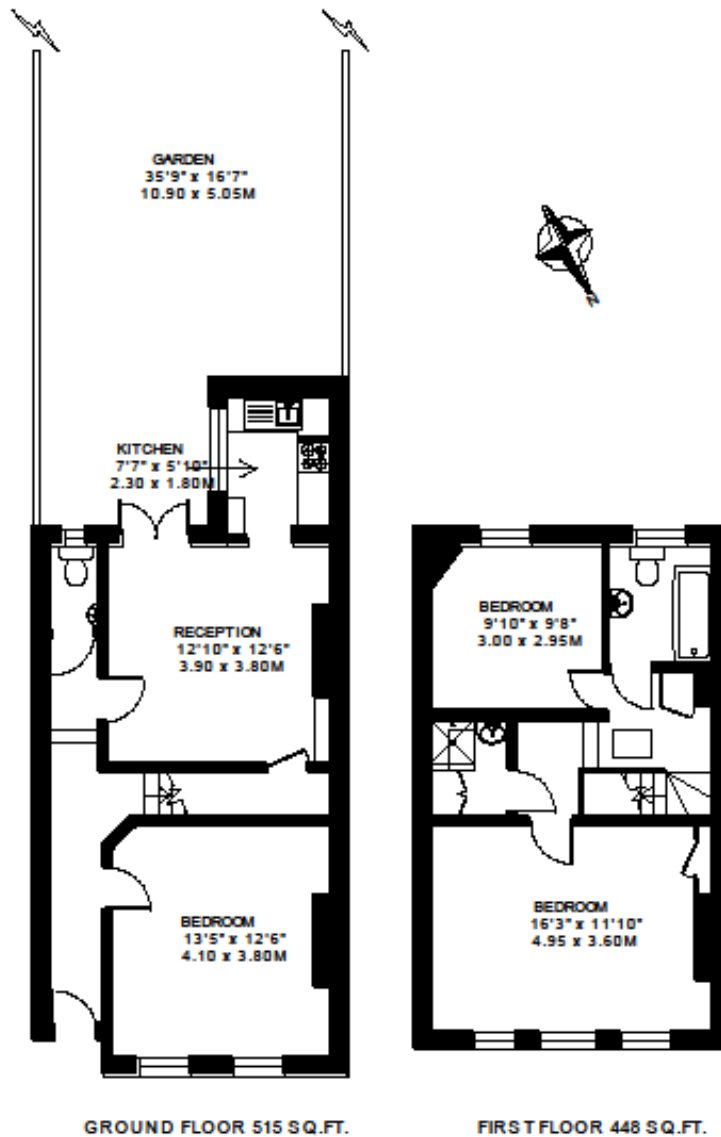
BALHAM

A very well located three double bedroom Victorian house just five minutes' walk of either Balham or Wandsworth Common which provide tube and train services into central London

£550 pw /£2383.33 pcm – Fees apply

RAVENSLEA ROAD LONDON SW12

APPROXIMATE INTERNAL FLOOR AREA
963 SQ.FT. / 89.5 SQ.M.



© FLOORPLAN PRODUCED FOR JOHN G. DEAN & Co. BY FLOORPLANNERS 07801 228850
ALL MEASUREMENTS ARE MAXIMUM, AND INCLUDE WINDOW BAYS AND WARDROBES WHERE APPLICABLE

