



JOHN DEAN
Estate Agents
Chartered Surveyors

Tel: 020 8673 8855 Fax: 020 8673 4879
email: info@johndean.co.uk

189 Balham High Road, London SW12 9BA



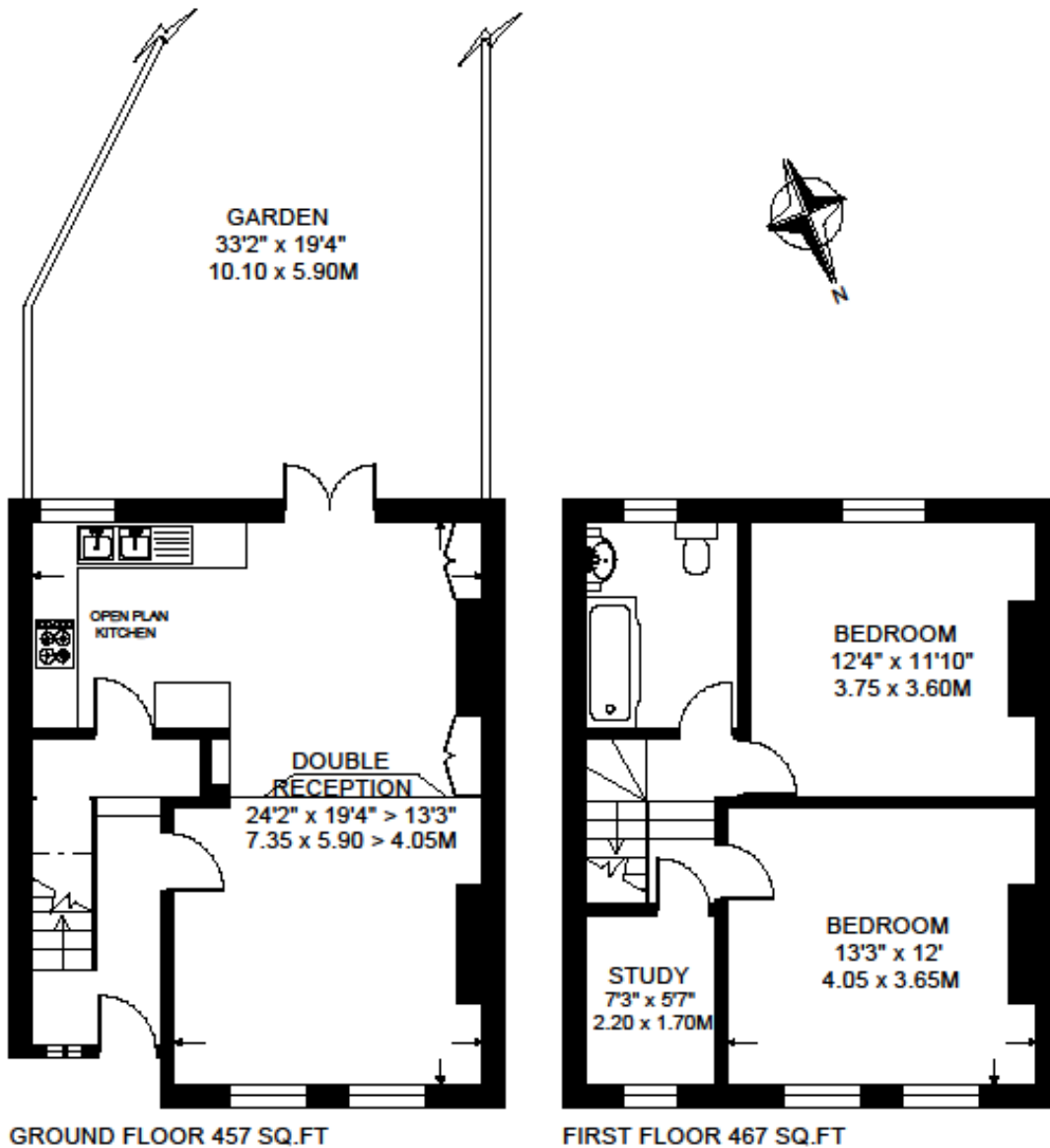
BALHAM

A character two double bedroom Victorian house with a 3rd bedroom/study and a large through reception room. Great location within comfortable walking distance of Balham tube & train station.

£435 pw / £1885 pcm – Fees apply

**RAVENSLEA ROAD
LONDON SW12**

**APPROXIMATE INTERNAL FLOOR AREA
924 SQ.FT. / 85.8 SQ.M.**



© FLOORPLAN PRODUCED FOR JOHN G. DEAN & Co. BY FLOORPLANNERS 07801 228850
ALL MEASUREMENTS ARE MAXIMUM, AND INCLUDE WINDOW BAYS AND WARDROBES WHERE APPLICABLE

