



**JOHN DEAN**  
Estate Agents  
Chartered Surveyors

Tel: 020 8673 8855 Fax: 020 8673 4879  
email: [info@johndean.co.uk](mailto:info@johndean.co.uk)

189 Balham High Road, London SW12 9BA



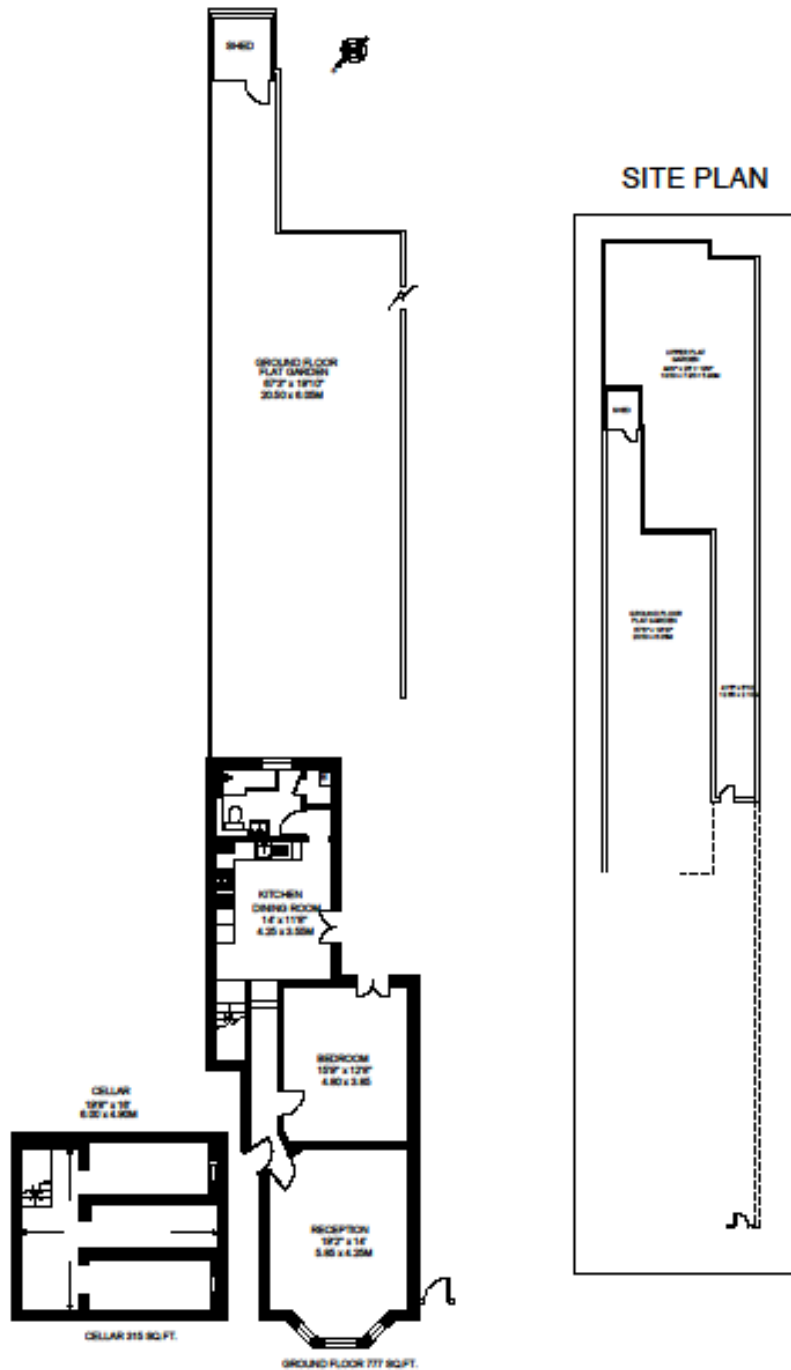
## **WANDSWORTH COMMON**

A particularly spacious one bedroom ground floor garden flat, offering an enormous reception room, an equally spacious bedroom, a kitchen/breakfast room and superb bathroom/WC. Located in a highly desirable road close to Wandsworth Common mainline station and Tooting Bec underground station.

**£392 pw / £1700 pcm – Fees apply**

# HENDHAM ROAD LONDON SW17

APPROXIMATE INTERNAL FLOOR AREA  
1092 SQ.FT. / 101.4 SQ.M.



© FLOORPLAN PRODUCED FOR JOHN G. DEAN & Co. BY FLOORPLANNERS 07801 228850  
ALL MEASUREMENTS ARE MAXIMUM, AND INCLUDE WINDOW BAYS AND WARDROBES WHERE APPLICABLE

