



JOHN DEAN
Estate Agents
Chartered Surveyors

Tel: 020 8673 8855 Fax: 020 8673 4879
email: info@johndean.co.uk

189 Balham High Road, London SW12 9BA



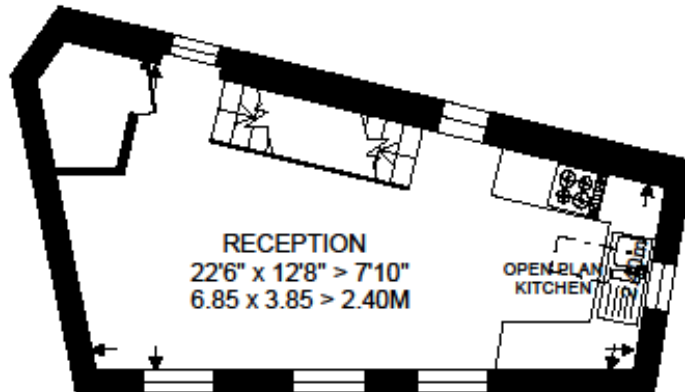
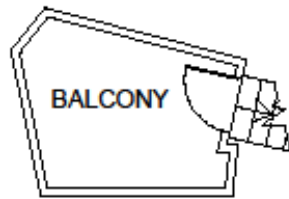
STREATHAM SW16

This stunning one bedroom house is newly built with great attention to detail. Streatham Common Southern region station is within a few minutes' walk which provides direct services into Victoria, London Bridge and East Croydon.

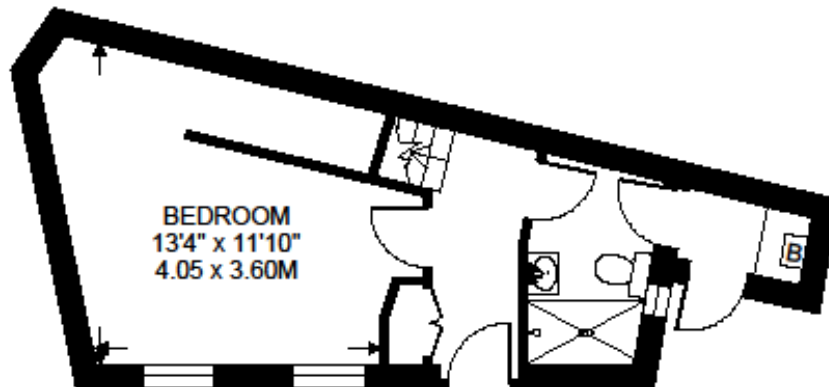
£300 pw / £1300 pcm - Fees apply

**EARDLEY ROAD
LONDON SW16**

APPROXIMATE INTERNAL FLOOR AREA
541 SQ.FT. / 50.2 SQ.M.



FIRST FLOOR 261 SQ.FT.



GROUND FLOOR 280 SQ.FT.

© FLOORPLAN PRODUCED FOR JOHN G. DEAN & Co. BY FLOORPLANNERS 07801 228850
ALL MEASUREMENTS ARE MAXIMUM, AND INCLUDE WINDOW BAYS AND WARDROBES WHERE APPLICABLE

Energy Efficiency Rating

| | Current | Potential |
|---|---------|-----------|
| Very energy efficient - lower running costs | | |
| (92 plus) A | | |
| (81-91) B | 89 | 90 |
| (69-80) C | | |
| (55-68) D | | |
| (39-54) E | | |
| (21-38) F | | |
| (1-20) G | | |
| Not energy efficient - higher running costs | | |