



JOHN DEAN
Estate Agents
Chartered Surveyors

Tel: 020 8673 8855 Fax: 020 8673 4879
email: info@johndean.co.uk

189 Balham High Road, London SW12 9BA



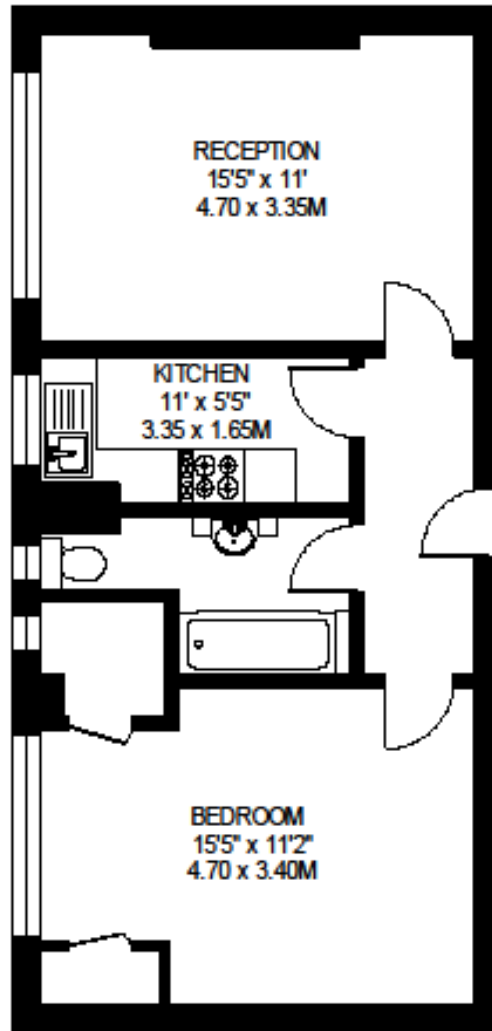
BALHAM

This top floor one bedroom flat is in a great position, close to all the amenities of central Balham which provides Northern Line underground and mainline train services as well as numerous shops, restaurants and bars.

£312 pw / £1350 pcm - Fees apply (Includes hot water and heating)

**DU CANE COURT
LONDON SW17**

**APPROXIMATE INTERNAL FLOOR AREA
534 SQ.FT. / 49.6 SQ.M.**



SEVENTH FLOOR

**© FLOORPLAN PRODUCED FOR JOHN G. DEAN & CO. BY FLOORPLANNERS 07801 228850
ALL MEASUREMENTS ARE MAXIMUM, AND INCLUDE WINDOW BAYS AND WARDROBES WHERE APPLICABLE**