



JOHN DEAN
Estate Agents
Chartered Surveyors

Tel: 020 8673 8855 Fax: 020 8673 4879
email: info@johndean.co.uk

189 Balham High Road, London SW12 9BA



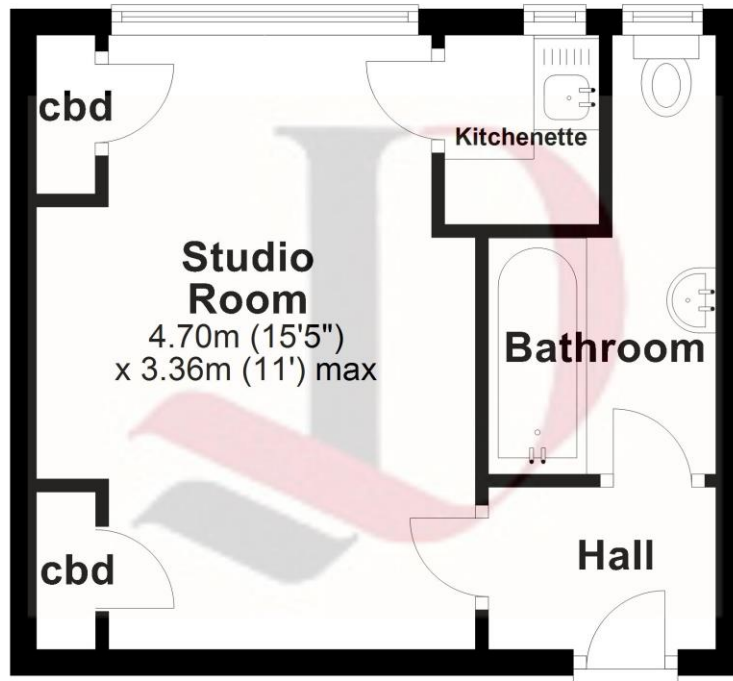
BALHAM

This fifth floor studio flat offers great potential, requiring modernisation yet with the benefit of double glazing and an extended lease. Sought after location within a few minutes walk of Balham tube and train station.

£239,000 L/H – 172 years

Fifth Floor

Approx. 24.5 sq. metres (263.3 sq. feet)



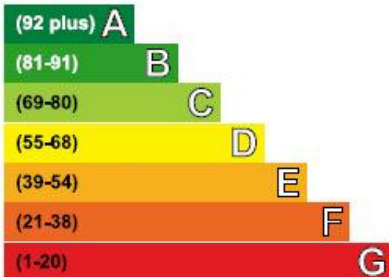
Total area: approx. 24.5 sq. metres (263.3 sq. feet)

Floorplans are provided for guidance only. They are not to scale and must not form any part of a legal contract or be reproduced.

Plan produced using PlanUp.

Energy Efficiency Rating

Very energy efficient • lower running costs



Not energy efficient • higher running costs

Current	Potential
77	80