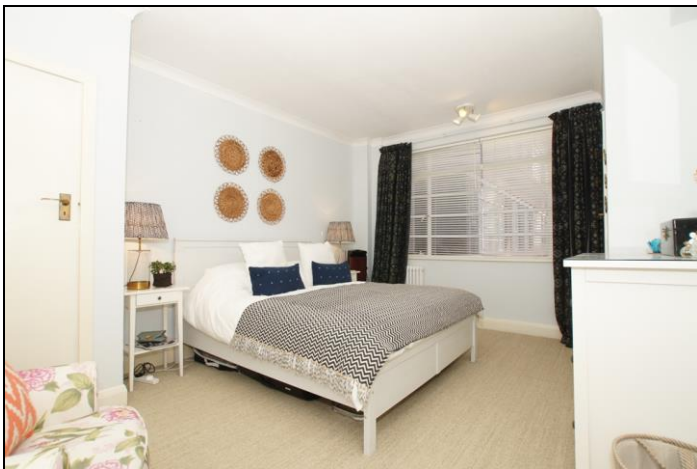
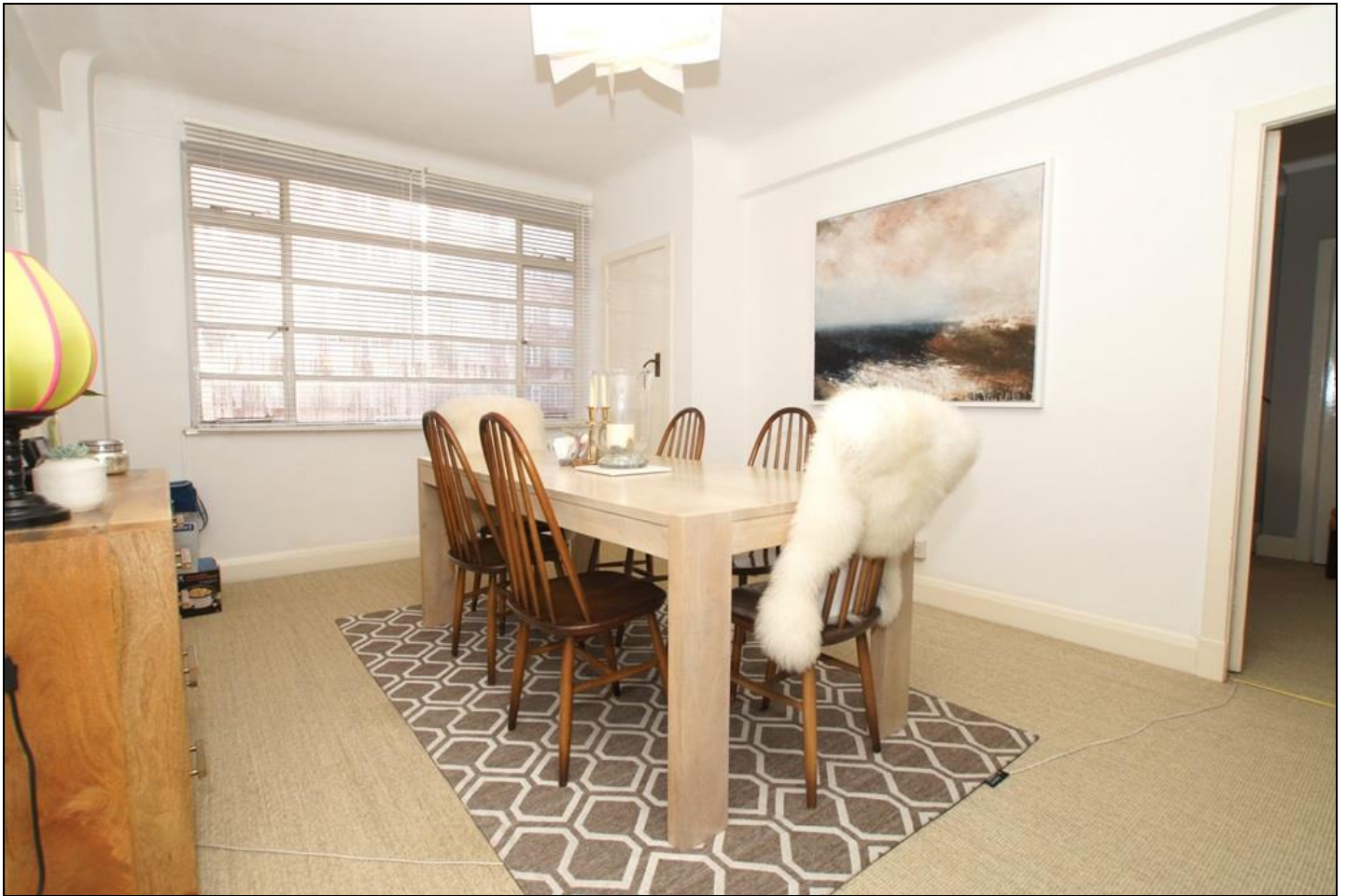




**JOHN DEAN**  
Estate Agents  
Chartered Surveyors

Tel: 020 8673 8855 Fax: 020 8673 4879  
email: [info@johndean.co.uk](mailto:info@johndean.co.uk)

189 Balham High Road, London SW12 9BA



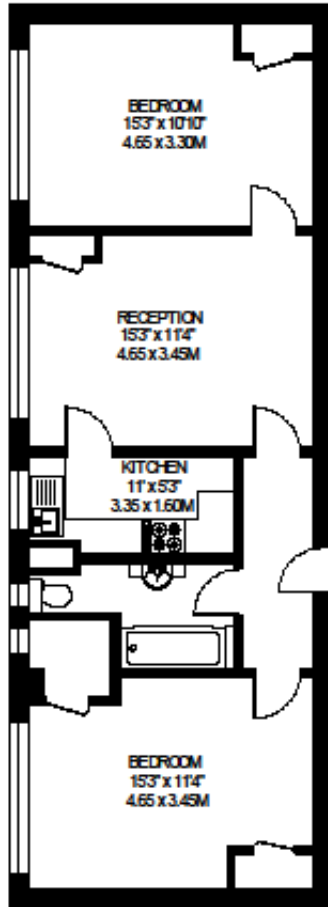
## **BALHAM**

A superb second floor apartment, with well proportioned accommodation which provides two double bedrooms, a large reception room and a good size kitchen. The flat enjoys a quiet location facing a pretty courtyard and is presented in immaculate condition with the benefit of a long lease and generous storage space.

**£499,950 L/H**

# DU CANE COURT LONDON SW17

APPROXIMATE INTERNAL FLOOR AREA  
706 SQ.FT. / 65.6 SQ.M.



SECOND FLOOR

© FLOORPLAN PRODUCED FOR JOHN G. DEAN & Co. BY FLOORPLANNERS 07801 228850  
ALL MEASUREMENTS ARE MAXIMUM, AND INCLUDE WINDOW BAYS AND WARDROBES WHERE APPLICABLE

