



JOHN DEAN
Estate Agents
Chartered Surveyors

Tel: 020 8673 8855 Fax: 020 8673 4879
email: info@johndean.co.uk

189 Balham High Road, London SW12 9BA



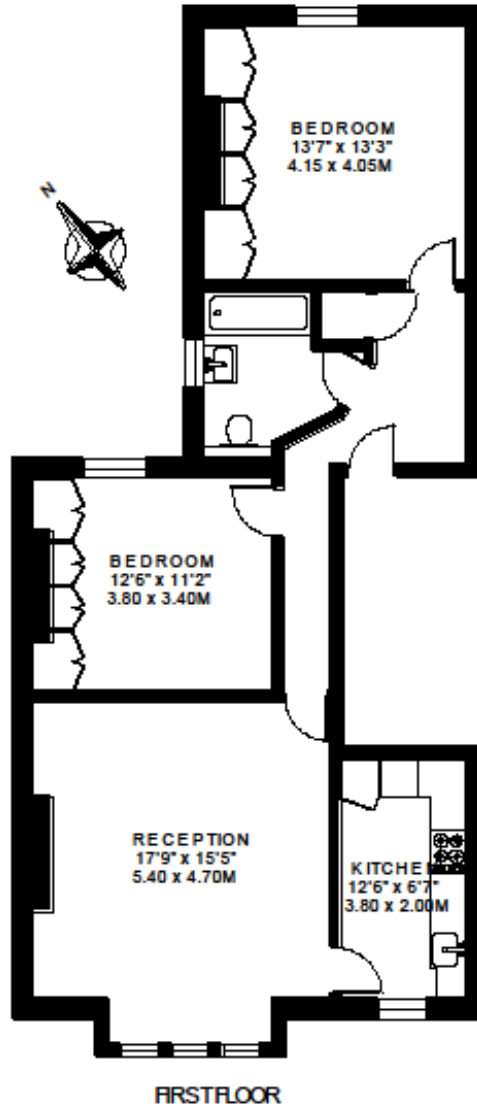
BALHAM

A stunning two double bedroom first floor period conversion, recently modernised to a very high standard. Fantastic position, located on the much sought after Heaver Estate conservation area close to Balham tube and train station

£404 pw / £1750 pcm – Fees apply

**DRAKEFIELD ROAD
LONDON SW12**

APPROXIMATE INTERNAL FLOOR AREA
840 SQ.FT. / 78.0 SQ.M.



FIRST FLOOR

© FLOORPLAN PRODUCED FOR JOHN G. DEAN & Co. BY FLOORPLANNERS 07801 228850
ALL MEASUREMENTS ARE MAXIMUM, AND INCLUDE WINDOW BAYS AND WARDROBES WHERE APPLICABLE

