



**JOHN DEAN**  
Estate Agents  
Chartered Surveyors

Tel: 020 8673 8855 Fax: 020 8673 4879  
email: [info@johndean.co.uk](mailto:info@johndean.co.uk)

189 Balham High Road, London SW12 9BA



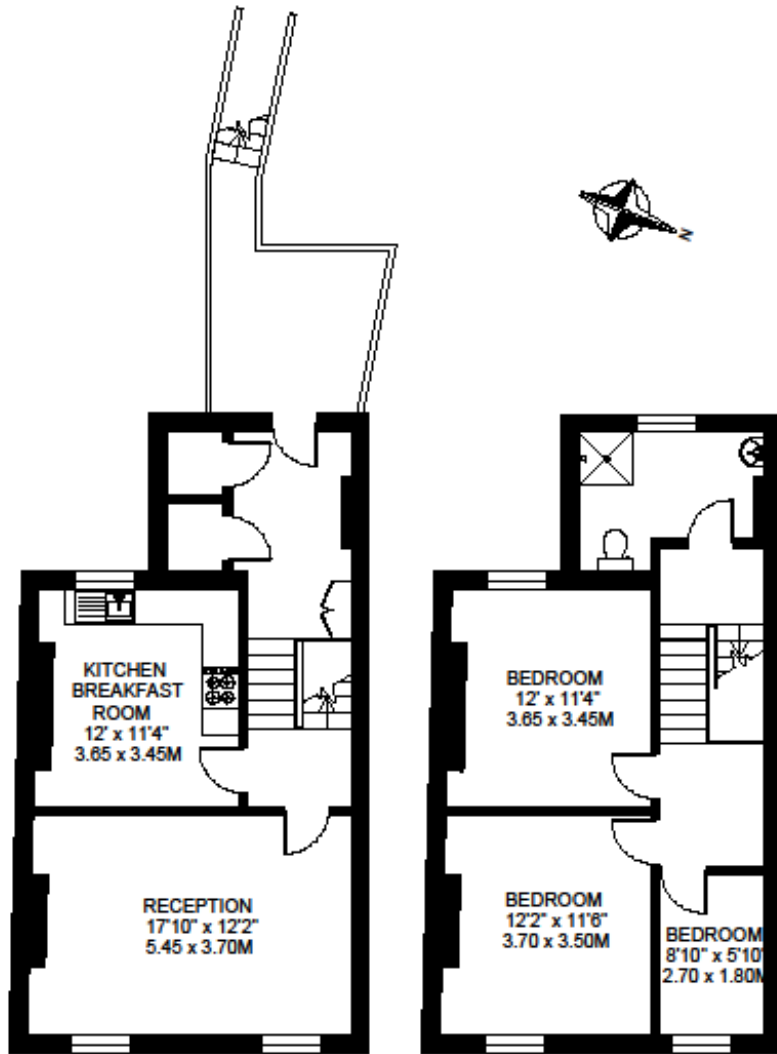
## **BALHAM**

A large split level, first and second floor, apartment with two double bedrooms, a single bedroom, large reception room and a kitchen/breakfast room. Located above commercial premises (pharmacy) close to Balham station which provides Northern Line underground and mainline over ground services.

**£400 pw / £1733.33 pcm – Fees apply**

**BEDFORD HILL  
LONDON SW12**

APPROXIMATE INTERNAL FLOOR AREA  
**1040 SQ.FT. / 96.6 SQ.M.**



FIRST FLOOR 520 SQ.FT.

SECOND FLOOR 520 SQ.FT.

© FLOORPLAN PRODUCED FOR JOHN G. DEAN & Co. BY FLOORPLANNERS 07801 228850  
ALL MEASUREMENTS ARE MAXIMUM, AND INCLUDE WINDOW BAYS AND WARDROBES WHERE APPLICABLE

**Energy Efficiency Rating**

